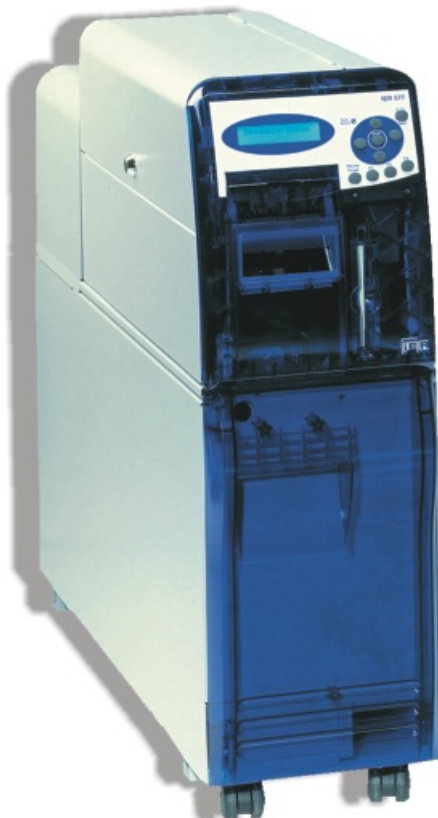




IER 577



High Volume ATB2 Ticket Printer *A Breakthrough in Performance and Reliability*



High Speed Direct Thermal Printing

Easy to Use, Simple to Maintain

Up to Three Vertical Feed Paper stocks

Internal Reject Box

Front Feed for Ticket Revalidation

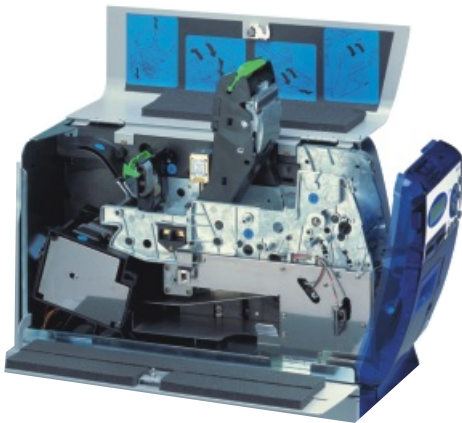
Integrated Disk Drive (option)

Passenger satisfaction technologies™

Breakthrough Performance and Reliability

The New IER 577 Ticketing Printer is designed for high volume ATB2 ticketing applications at travel agencies, Central Ticketing Offices and airports. The IER 577 uses a revolutionary design for breakthrough performance in reliability and ease of maintenance. The IER 577 has a unique and simplified internal design resulting in a high MTBF (Mean Time Between Failure) even when operated 24 hours per day. A straight paper path, reduced number of parts, simplified mechanical parts and custom integrated circuits result in a high level of efficiency and reduced cost of ownership.

Fig. 1



Simple to Use, Easy to Maintain

The IER 577 is very simple to use and to maintain. The front panel includes a highly visible 2 x 20 character LED display and simple to use setup and navigation keys. In addition, three "Profile" keys allow the user to quickly change from one printing configuration to another. An integrated disk drive simplifies the downloading of new applications.

As Fig. 1 and 2 show, the user has tremendous access to all the internal components of the IER 577 (print head, magnetic heads, paper feeder module, etc). These components have been designed with ease of maintenance in mind.

A new modular concept allows the user to easily replace components, often with no tools at all, and obtain perfect alignment and operation with no adjustment required.

High Speed Direct Thermal Printing

The IER 577 prints at a fast, 40 coupons/min for high speed, high volume printing. Direct Thermal Printing ensures sharp, clear printing without the added cost of consumable ribbons and cartridges. The IER 577 can be provided with magnetic encoding capabilities or without to meet individual customers needs.

Multiple Paper Feeds for Flexibility

Up to three automatic vertical paper feeds are offered standard on the IER 577. The feeds are easily accessible from the secured paper stocks bin below the printer. In addition a front feed is available for the revalidation of tickets.

100 Output Stacker and Internal Reject Box

A secured internal reject box provides added value for ticketing operations. The tickets are printed in descending order and are easy to withdraw from the stacker so that the users will have them quickly and neatly stacked in the proper order (first coupon printed is on top of the stack).

Fig. 2



Compliance

- Meets IATA Resolutions 723c, 722d, 722e
- AEA compatible

Print technology

- Direct Thermal

Magnetic encoding/decoding

- 4 tracks, 210 bpi
- Stock Control Number (SCN) pre-read

Electronics

- Disc Processor 32 bits
- 4 Mb FLASH
- 12 Mb DRAM
- 2 Mb SRAM (User memory)
- Option: 12 Mb FLASH, 6 Mb SRAM

Paper handling

- Up to 3 continuous fanfold stocks, 1,000 documents each
- ATB coupons/wallets: 7 3/8" and 8"
- Front insertion mode for revalidation
- Magnetic encoding/decoding speed: 24"/sec (600 mm/sec)
- Output stacker (up to 100 documents)
- Internal reject box (up to 25 documents)

Interface

- Serial, asynchronous RS232
- Transmission rates up to 38.4 baud
- Additional RS232 port

Printing features

- Resolution: 203 dpi (8 x 8 dots/mm) print head
- Print line width: 3 1/16" (80 mm)
- Print speed: 7"/sec (180 mm/sec)
- Up to 40 coupons/min
- Extended graphics capabilities: logos, OCR, bar code
- Standard IATA fonts

Control Panel

- 2 x 20 character backlit LED display
- 4 navigation keys
- 3 profile keys

Additional feature

- Floppy disk for software downline loading

Power supply

- AC power: 90 - 240 VAC, 50/60 Hz+ 2%

Environmental

- Operating temperature: +41°F to +104°F (+5°C to +40°C)
- Storage temperature: -4°F to +158°F (-20°C to +70°C)
- Operating humidity: 20% to 80% (non-condensing)

Dimensions

- Printer:
H x W x D: 275 x 225 x 510 mm (10.8" x 8.9" x 20")
Weight: 17 kg (37.5 lbs)
- Printer with cabinet:
H x W x D: 668 x 247 x 835 mm (26.3" x 9.7" x 32.9")
Weight: 34 kg (75 lbs)



Passenger satisfaction technologies.™

IER Headquarters France
Tel.: +33 (0)1 41 38 60 00 - Fax: +33 (0)1 41 38 62 75
SITA Code: PARIRCR

IER Nordic AB Mölndal - Sweden
Tel.: +46 (31) 746 8050 - Fax: +46 (31) 87 25 15

IER Madrid Spain
Tel.: +34 91 535 89 75 - Fax: +34 91 535 89 76

IER Singapore
Tel.: +65 276 6966 - Fax: +65 271 5563

IER Tokyo Japan
Tel.: +81 (3) 3585-3192 - Fax: +81 (3) 3585-1134

IER Shanghai P.R. of China
Tel.: +86 (21) 6473 6792/97 - Fax: +86 (21) 6473 6806

IER Inc. Dallas Tx, USA
Tel.: +1 (972) 991 2292 - Fax: +1 (972) 991 1044
Toll Free: 1-800 624 8538

IER Inc. Chicago IL, USA
Tel.: +1 (847) 795-8870 - Fax: +1 (847) 795-8879

IER Inc. Temple Tx, USA
Tel.: +1 (254) 742-9000 - Fax: +1 (254) 742-9050

IER Ltd London UK
Tel.: +44 1753 68 76 66 - Fax: +44 1753 68 55 53

IER Dubai UAE
Tel.: +971 4 347 67 20 - Fax: +971 4 347 67 03

IER is a registered trademark of IER, SA. Company with a Managing Board and a Supervisory Board.
Capital: FF 82,091,700 R.C.S.: Nanterre B 622 050 318

